

# ROCKWALL CENTRAL SHOPPING CENTER

2006-2014 South Goliad, Rockwall, Texas 75087

## Retail For Lease

Rockwall is approximately 22 miles east of downtown Dallas on Interstate 30 with a population of just over 25,000. Rockwall has an advantage of being near the Dallas Metroplex without losing its rural atmosphere, and proudly maintains one of the highest-ranking school systems and one of the lowest tax rates within the State of Texas. The City of Rockwall was recently featured on Pat Summerall's "Champions of Industry" video series. Situated on the East shore of Lake Ray Hubbard, people can enjoy exceptional fishing, boating, and sailing, in addition to the 330 acres of park land and dedicated natural open space.

## FEATURES

- Anchored by Hobby Lobby

## TRAFFIC COUNTS

- East of Interstate 30 - 79,000 CPD
- West of Interstate 30 - 91,000 CPD

Year: 2021 source: TXDOT

## DEMOGRAPHICS

	1 Mile	3 Mile	5 Mile
Population	6,434	41,246	102,190
Households	2,770	15,203	35,304
Avg Household Income	\$94,714	\$138,559	\$141,796

Year: 2022 source: ESRI



## CONTACTS:

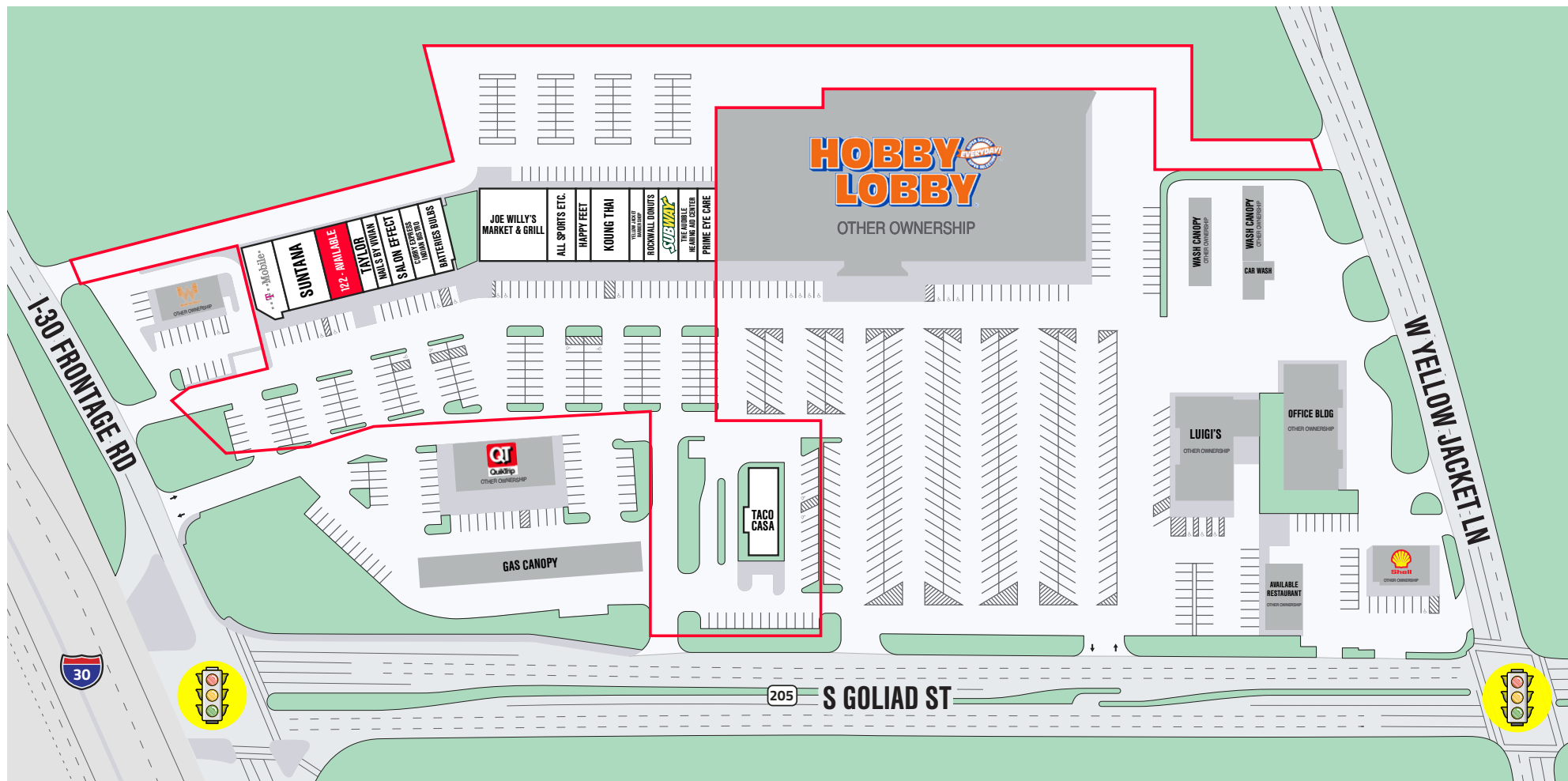
**Joe Swedlund**  
SVP-Retail Leasing  
972-931-7400 x217  
jswedlund@sabrerealty.com

**Carla Visnick**  
Senior Property Manager-Retail  
972-931-7400 x215  
carla@sabrerealty.com

Dallas/Ft. Worth  
16475 Dallas Parkway  
Suite 880  
Addison, TX 75001



*This information is deemed reliable, however, we make no guarantee, warranty or representation as the completeness or accuracy thereof.*



SUITE	TENANT	SF
200	JOE WILLY'S	5,250 SF
212	ALL SPORTS ETC.	2,250 SF
214	HAPPY FEET	1,125 SF
218	KOUNG THAI	3,000 SF
222	YELLOW JACKET BARBER SHOP	1,125 SF
224	ROCKWALL DONUTS	1,125 SF
226	SUBWAY	1,500 SF

SUITE	TENANT	SF
228	THE AUDIBLE HEARING AID CENTER	1,500 SF
230	PRIME EYE CARE	1,500 SF
2008	TACO CASA	2,825 SF
100	T-MOBILE	2,500 SF
112CR	CAMERA CLOSET	36 SF
118	SUNTANA INC.	3,235 SF
122	AVAILABLE	2,625 SF

SUITE	TENANT	SF
126	TAYLOR GOLD & SILVER	1,125 SF
130	NAILS BY VIVIAN	1,125 SF
138	SALON EFFECT	1,875 SF
140	CURRY EXPRESS INDIAN BISTRO	1,500 SF
150	BATTERIES PLUS+BULBS	1,811 SF

**Joe Swedlund**  
SVP Retail Leasing

972-931-7400 x217  
jswedlund@sabrerealty.com

**Carla Visnick**  
SP Manager-Retail

972-931-7400 x215  
carla@sabrerealty.com



*This information is deemed reliable, however, we make no guarantee, warranty or representation as the completeness or accuracy thereof.*





**Joe Swedlund**  
SVP Retail Leasing

972-931-7400 x217  
jswedlund@sabrerealty.com

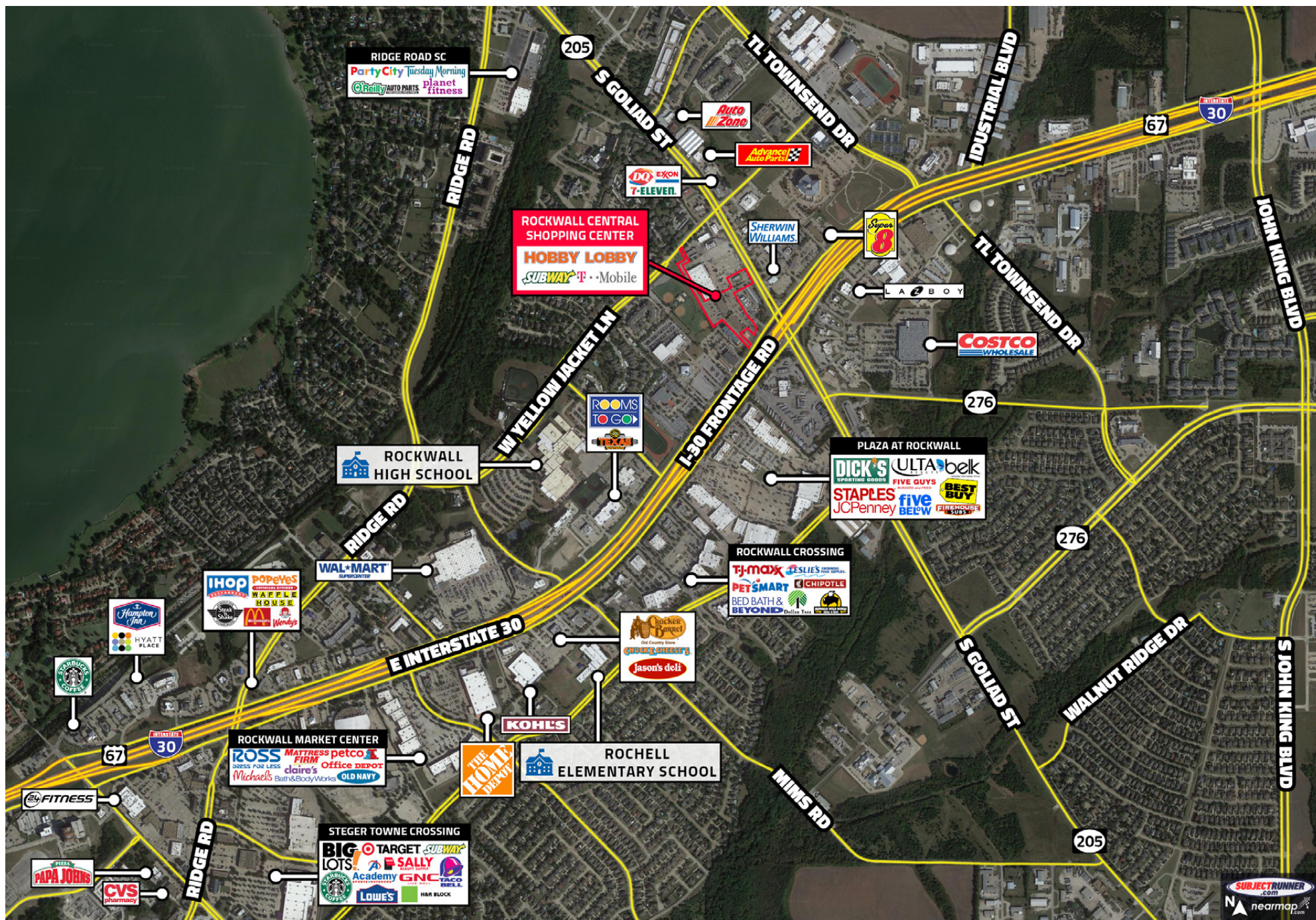
**Carla Visnick**  
SP Manager-Retail

972-931-7400 x215  
carla@sabrerealty.com



*This information is deemed reliable, however, we make no guarantee, warranty or representation as the completeness or accuracy thereof.*





**Joe Swedlund**  
SVP Retail Leasing

972-931-7400 x217  
jswedlund@sabrerealty.com

**Carla Visnick**  
SP Manager-Retail

972-931-7400 x215  
carla@sabrerealty.com



*This information is deemed reliable, however, we make no guarantee, warranty or representation as the completeness or accuracy thereof.*